

DPS's top Denver Plan 2020 goal is to ensure Great Schools in Every Neighborhood.

La meta principal del Plan de Denver 2020 de DPS es asegurar que haya escuelas excelentes en todos los vecindarios.



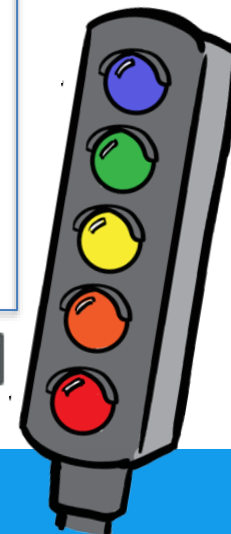
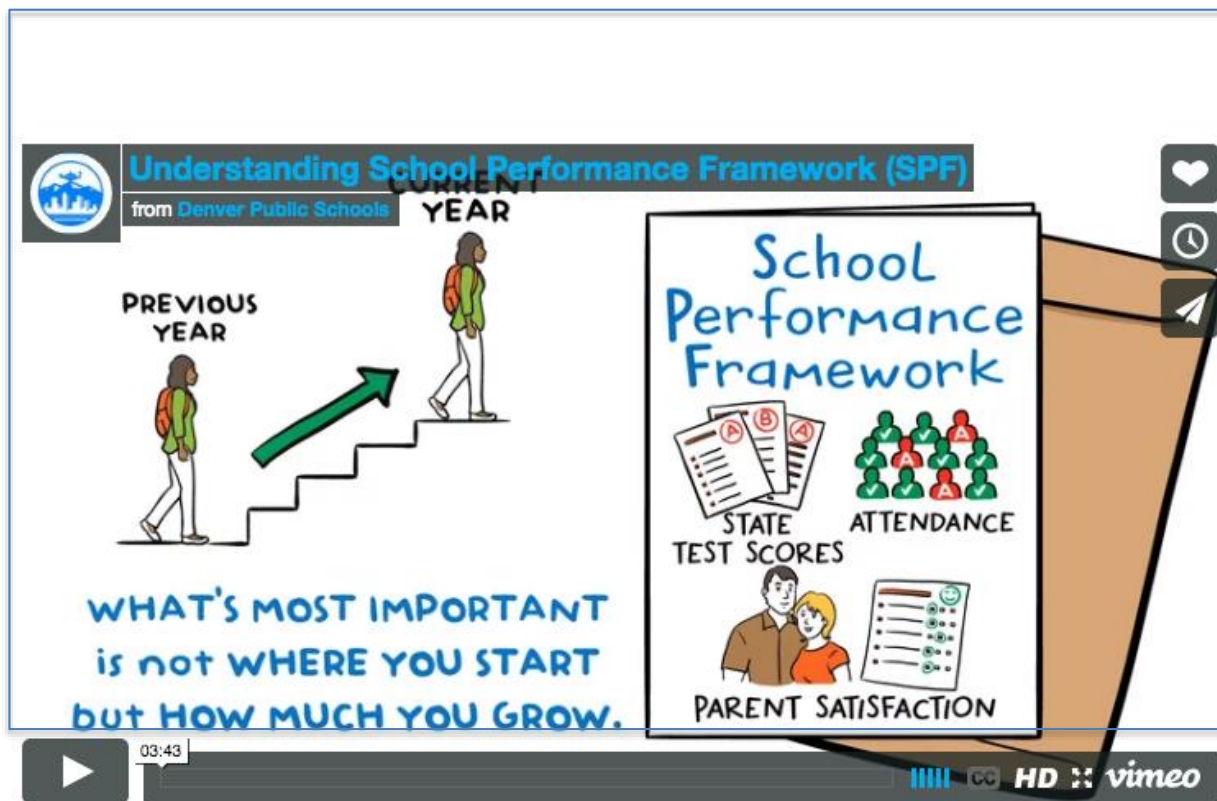
We check progress to see how well each school is helping students succeed.

Comprobamos el progreso para constatar que las escuelas estén ayudando a los estudiantes a alcanzar el éxito.



The School Performance Framework is a report card that shows how well each school is doing.

El Marco de Desempeño Escolar es una boleta de calificaciones del desempeño de la escuela.



The 2016 School Performance Framework has several new improvements:

El Marco de Desempeño Escolar de 2016 incluye varias mejoras:

- Two years of test results on the new state test – PARCC: CMAS
- Los resultados de dos años de las nuevas pruebas estatales PARCC: CMAS
- A new Equity indicator to see how well our school serves all students, regardless of background or ability
- Un nuevo indicador de equidad para comprobar en qué medida nuestra escuela sirve a todos los estudiantes, independientemente de sus antecedentes o nivel de habilidad
- Nearly twice as many measures of early literacy
- Casi el doble de evaluaciones de lectoescritura temprana



Our School Performance Framework ratings over the past four years:

Clasificación de nuestra escuela en el Marco de Desempeño Escolar en los últimos cuatro años:

2013	2014	2015	2016
Accredited on Watch	Accredited on Watch	No SPF	Meets Expectations

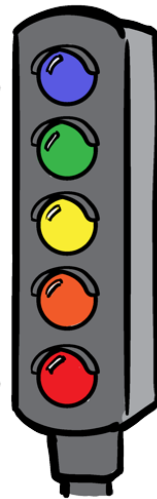
Distinguida (80 a 100 %)

Cumple con las expectativas (51 a 79 %)

Acreditada en observación (40 a 50 %)

Acreditada en observación prioritaria (34 a 39 %)

Acreditada bajo prueba (hasta el 33 %)



Distinguished (80-100%)

Meets Expectations (51-79%)

Accredited on Watch (40-50%)

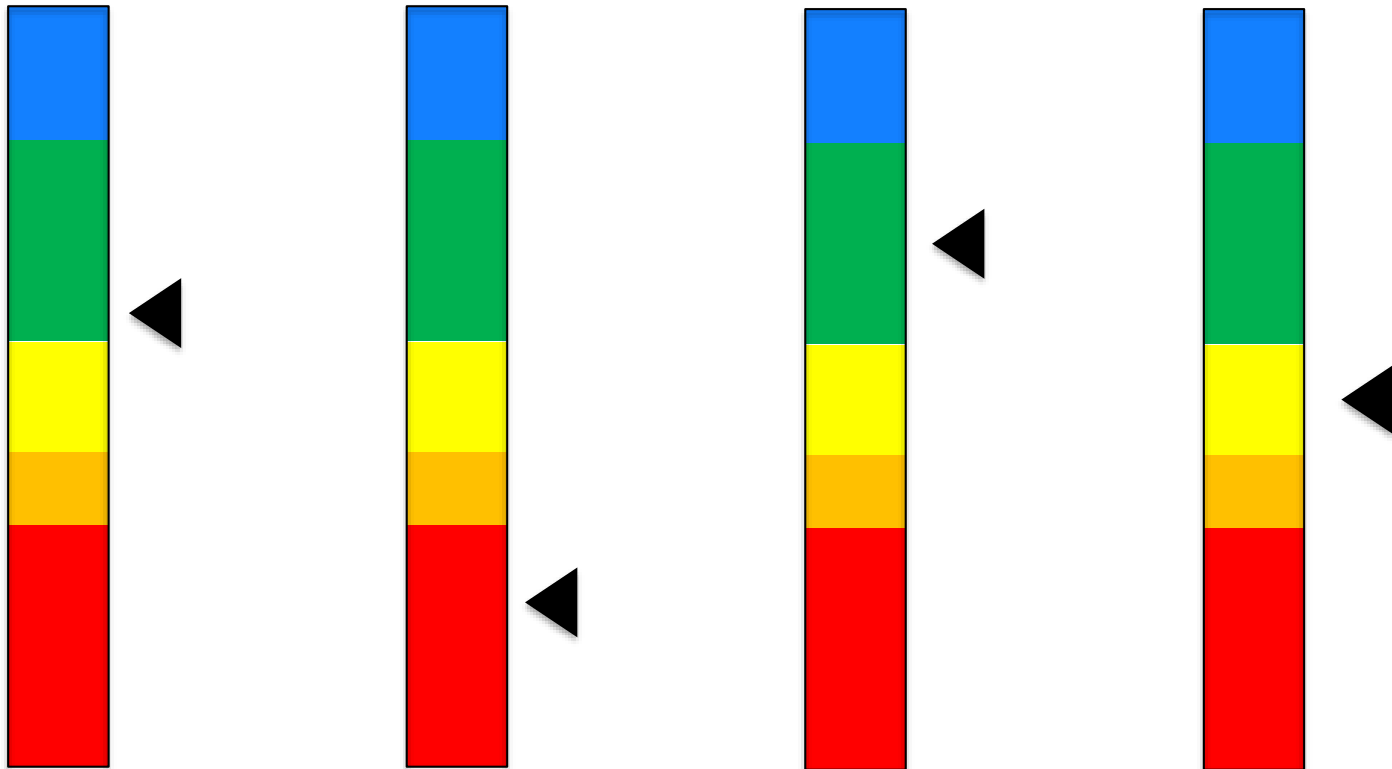
Accredited on Priority Watch (34-39%)

Accredited on Probation (Up to 33%)

Our School Performance Framework includes a variety of indicators to show progress:
Nuestro Marco de Desempeño Escolar incluye una variedad de indicadores del progreso:

ELEMENTARY

Overall/En general Status/Estado Growth/Progreso Equity/Equidad



Our School Performance Framework includes a variety of indicators to show progress

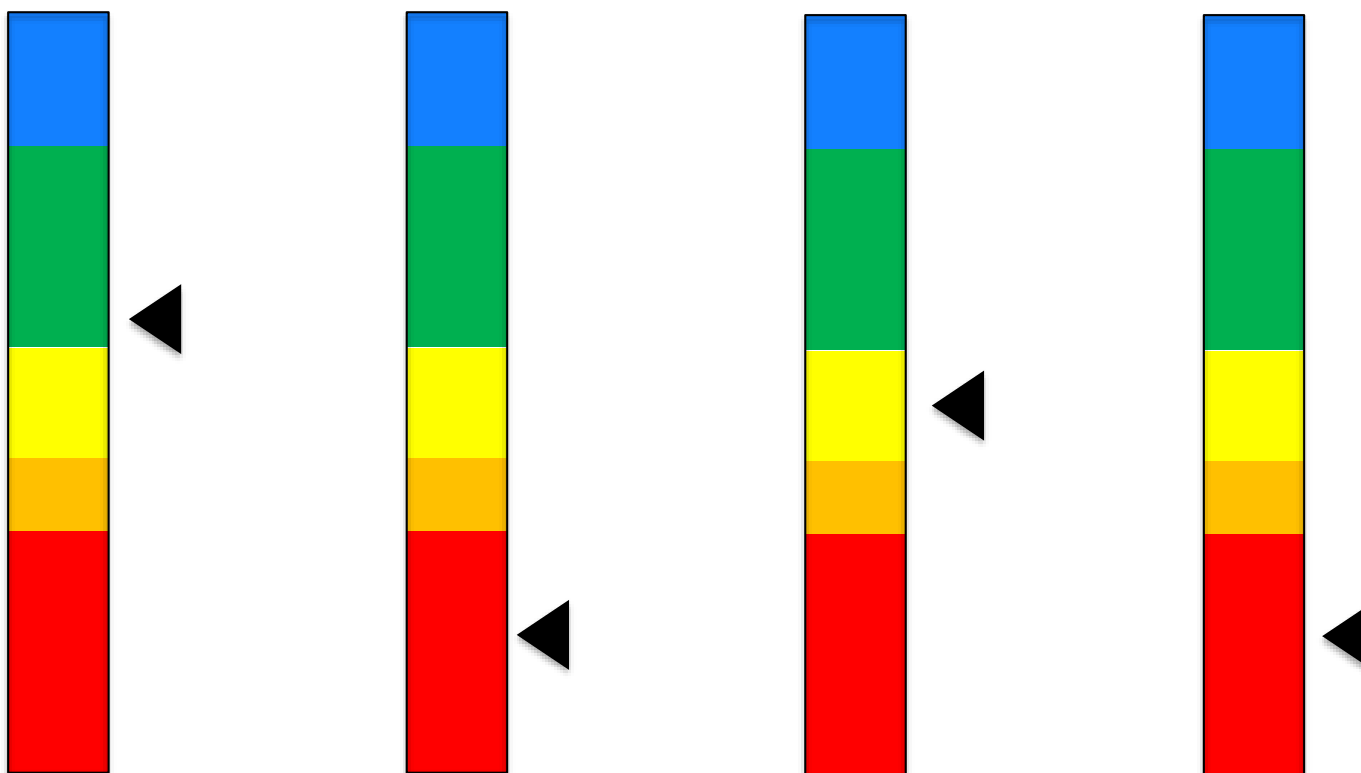
MIDDLE SCHOOL

Overall/En general

Status/Estado

Growth/Progreso

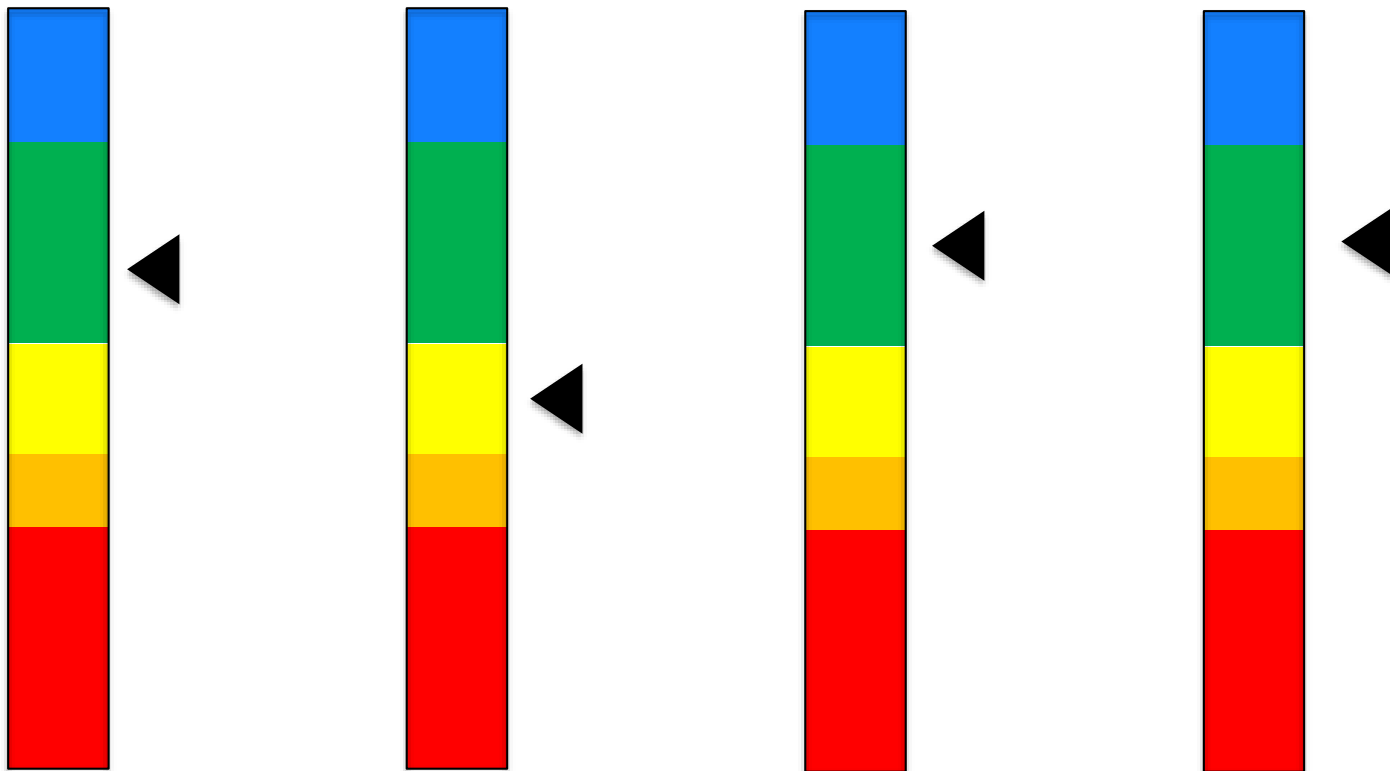
Equity/Equidad



Our School Performance Framework includes a variety of indicators to show progress

HIGH SCHOOL

Overall/En general Status/Estado Growth/Progreso Equity/Equidad



Areas of focus for our school and our community based on School Performance Framework results:

Áreas de enfoque para nuestra escuela y nuestra comunidad de acuerdo con los resultados del Marco de Desempeño Escolar:

• Celebrations / Éxitos :

- Elementary School Growth
 - CMAS- FRL, Students of Color, ELL
- Elementary ACCESS Growth & Students On-Track
 - 64 MGP (35 MGP year prior)
 - 4/6 points (2/6 year prior)
- Elementary CMAS Catch-Up Growth for Literacy: (Exceeds)

6/6 points

• Opportunities for Growth / Oportunidades para progresar :

- Student/Parent Satisfaction- Approaching
 - Attendance- 1/3 points
 - Student Satisfaction- 1/3 points
- Status- Literacy: Overall % Meeting or Exceeding Expectations 1 / 2 points
- Status- Math: Overall % Meeting or Exceeding Expectations 0 / 2 points

